

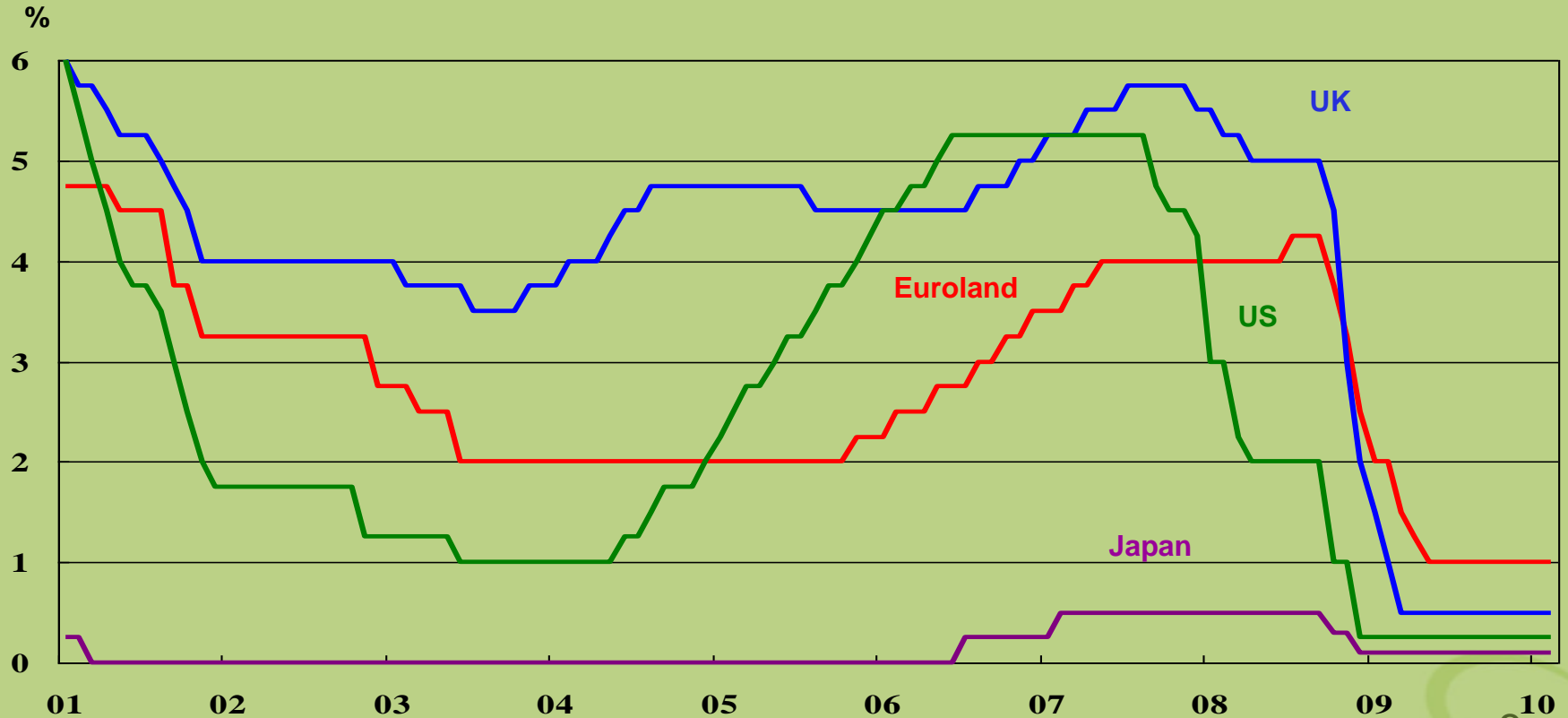


Economic Update: What Now?

Kevin Lings

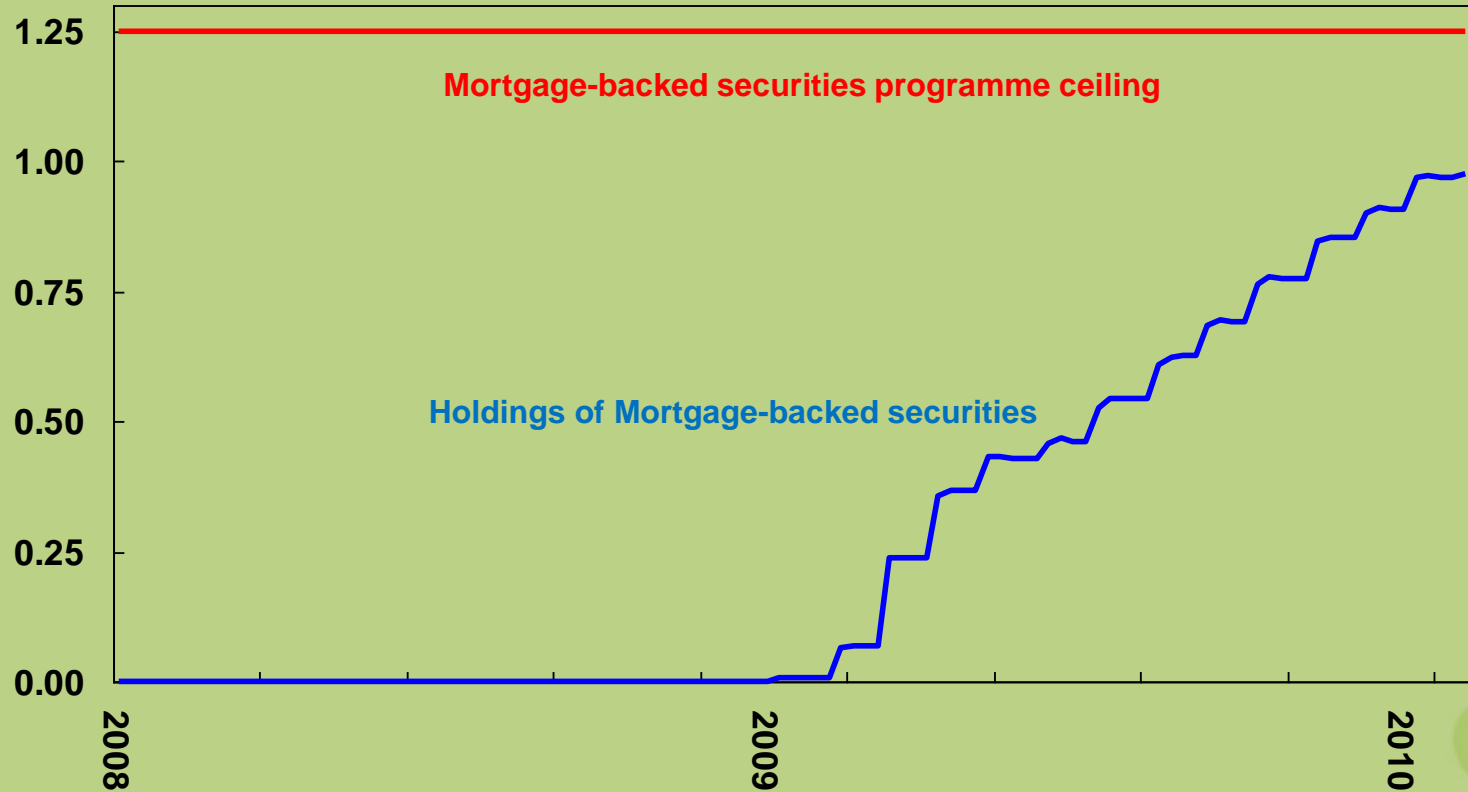


Euro-area, US, Japan and UK official interest rates



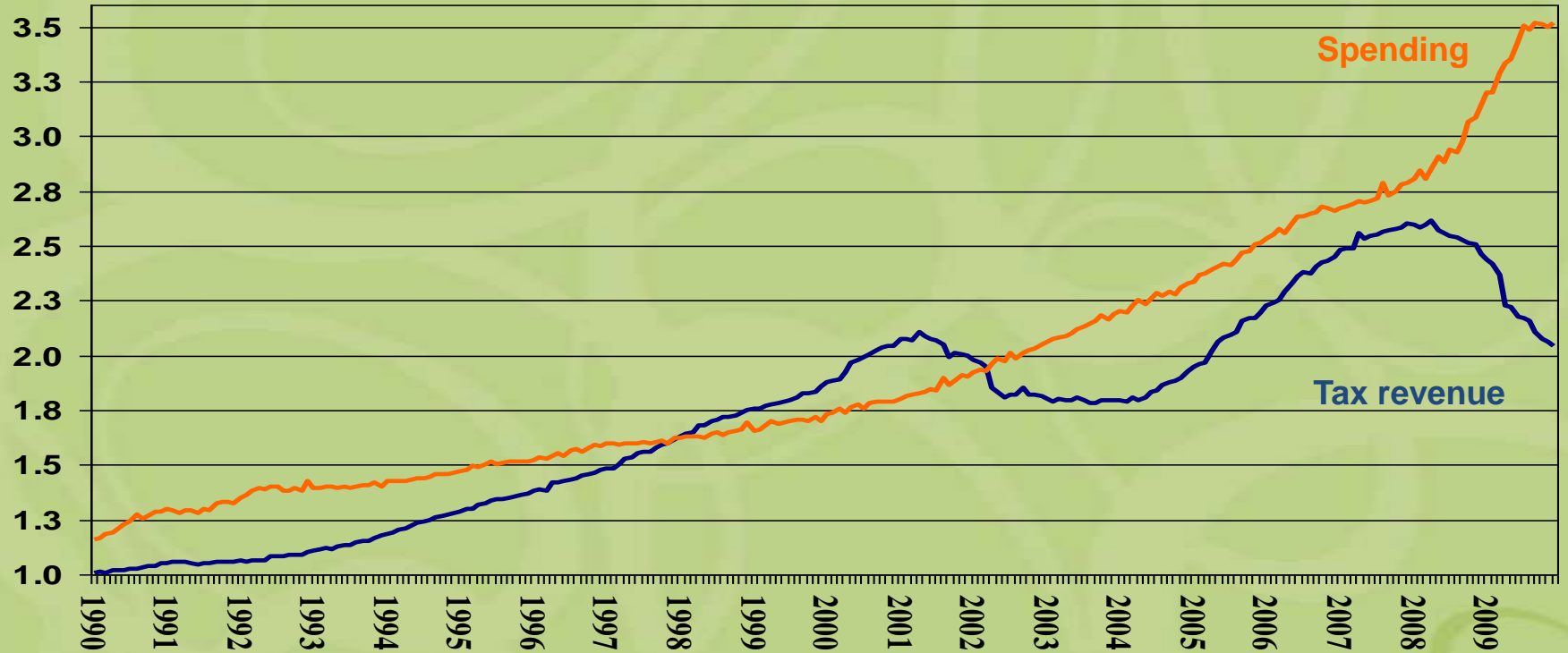
US Federal Reserve: mortgage backed securities

\$ billion



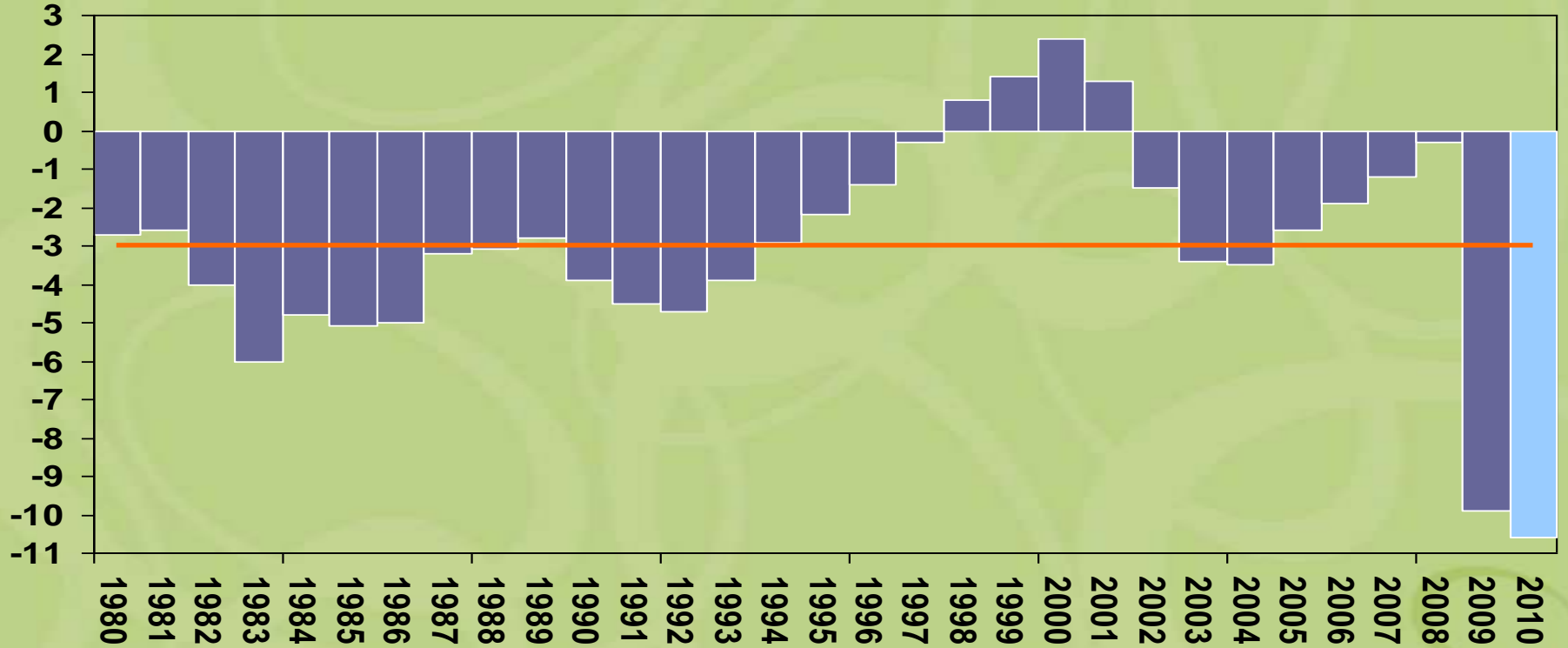
US Federal Budget

\$bn, 12-month running total

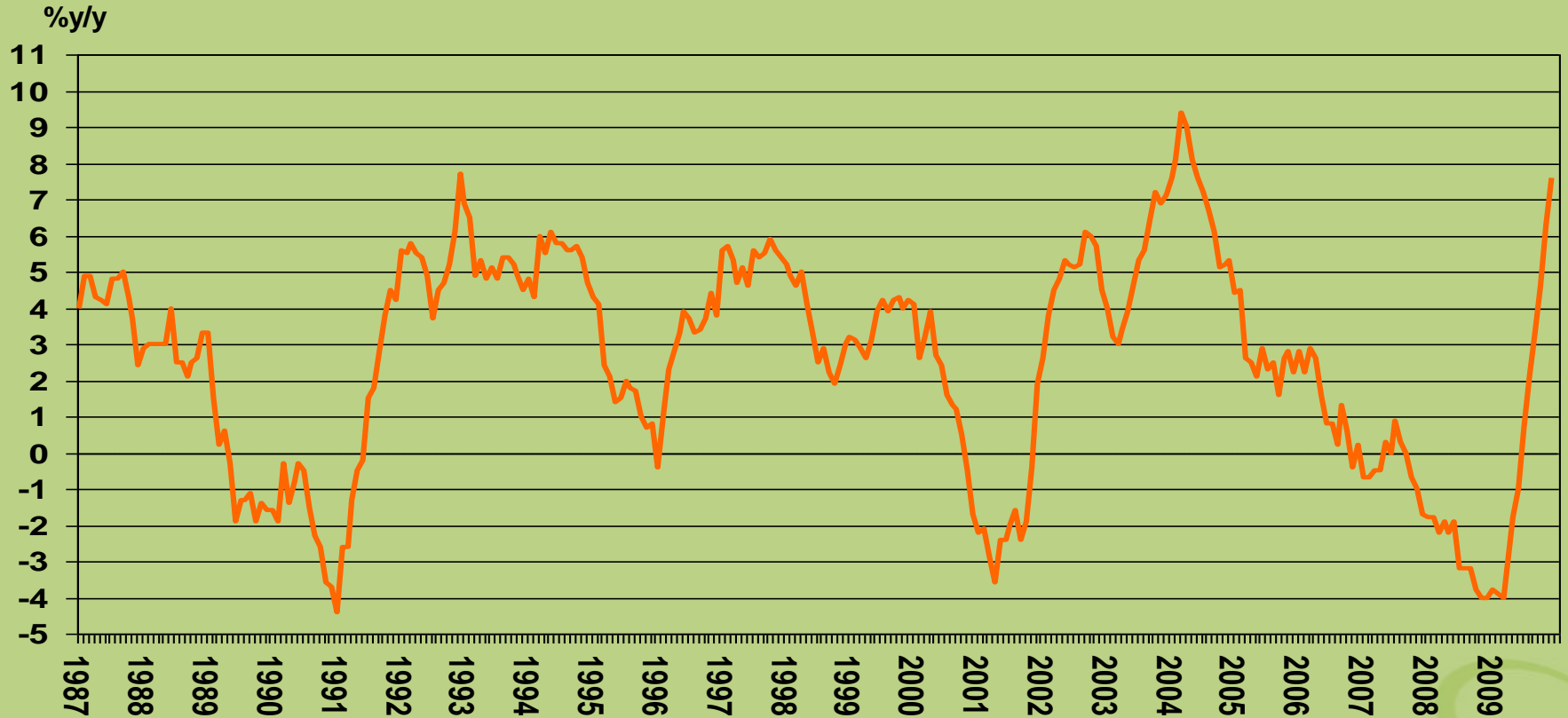


US Budget Deficit as percentage of GDP

%

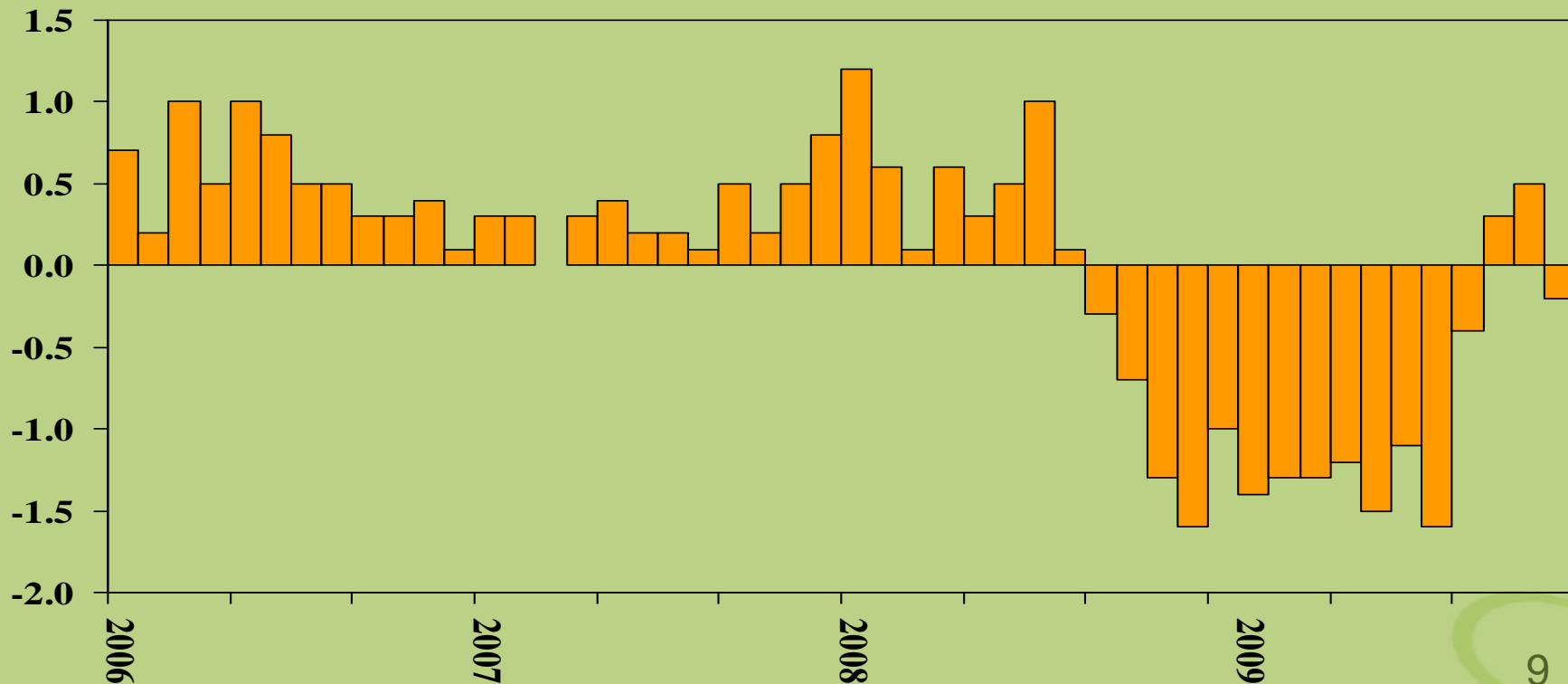


US leading indicator

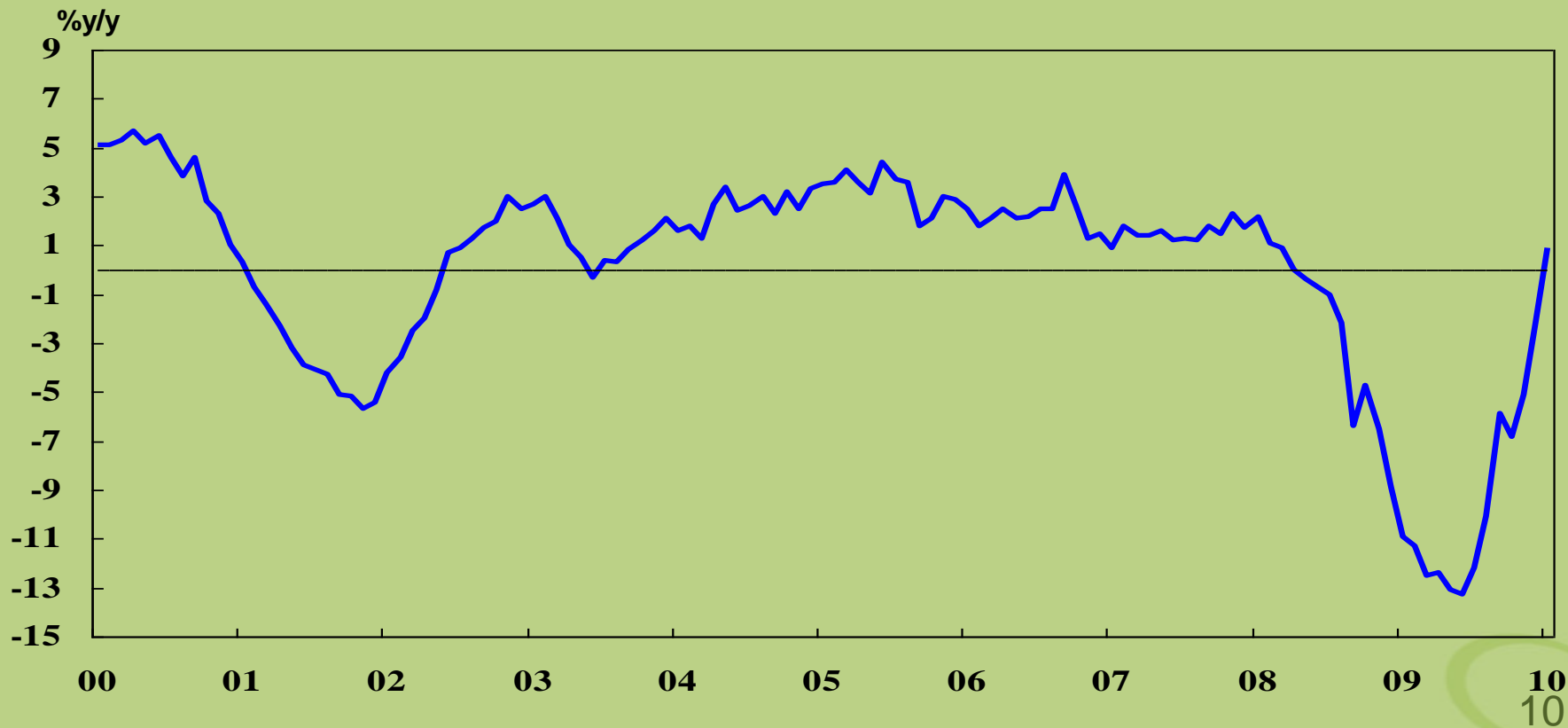


US inventories

%m/m Seasonally adjusted

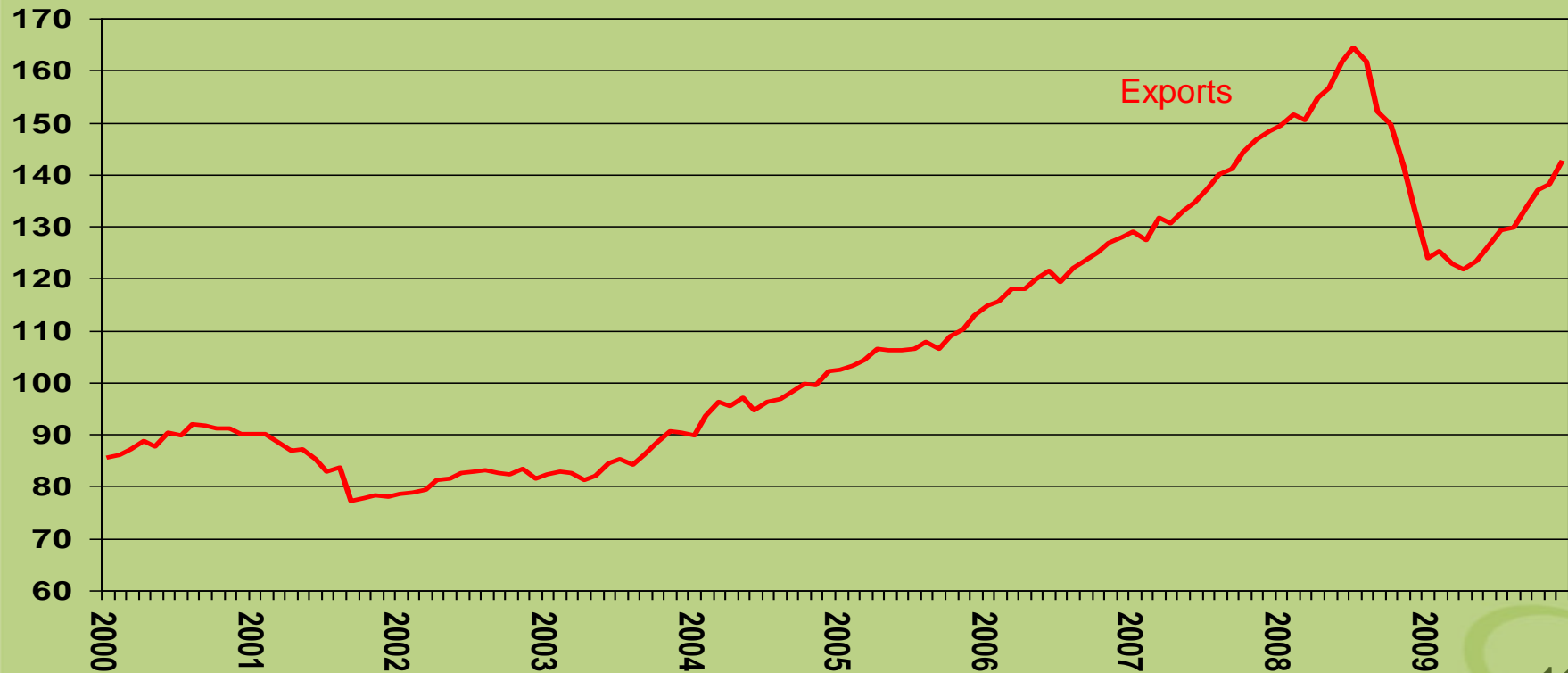


US industrial production



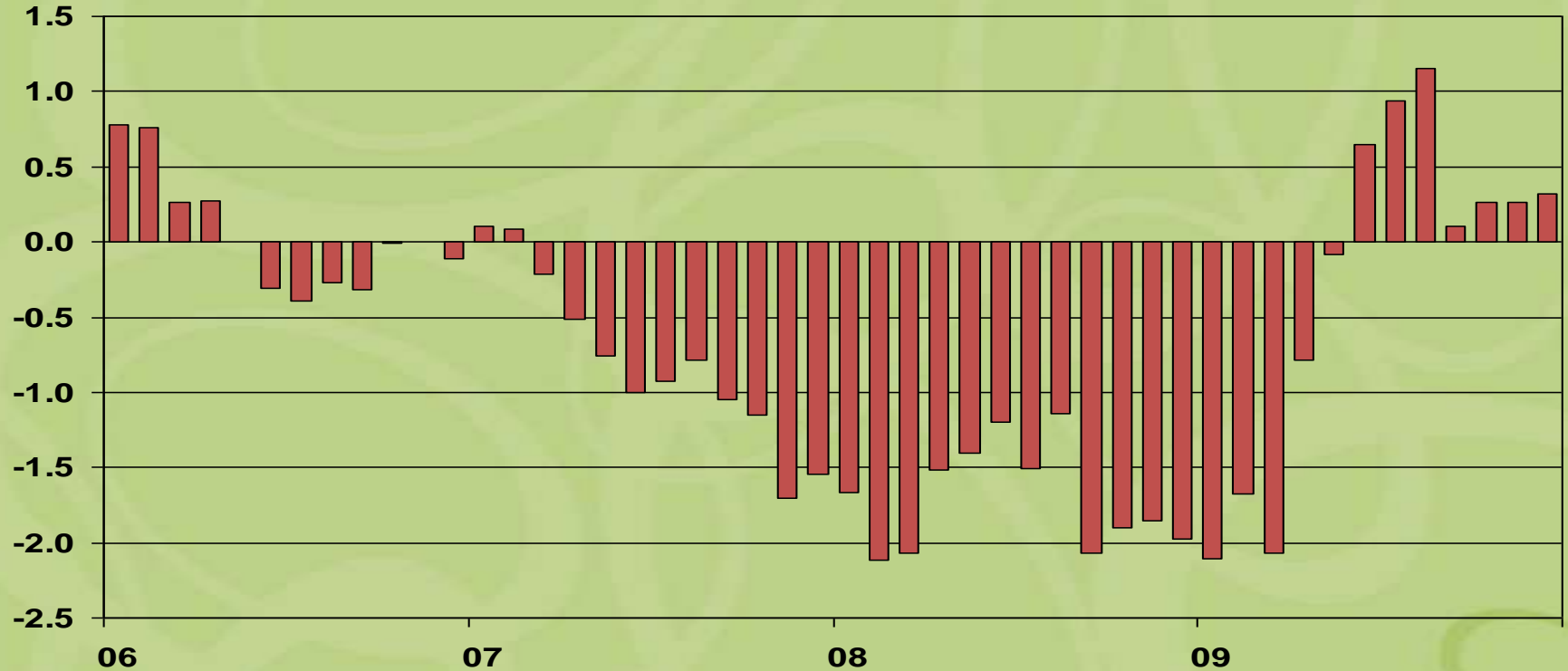
US exports

Index, Jan 2000 = 100

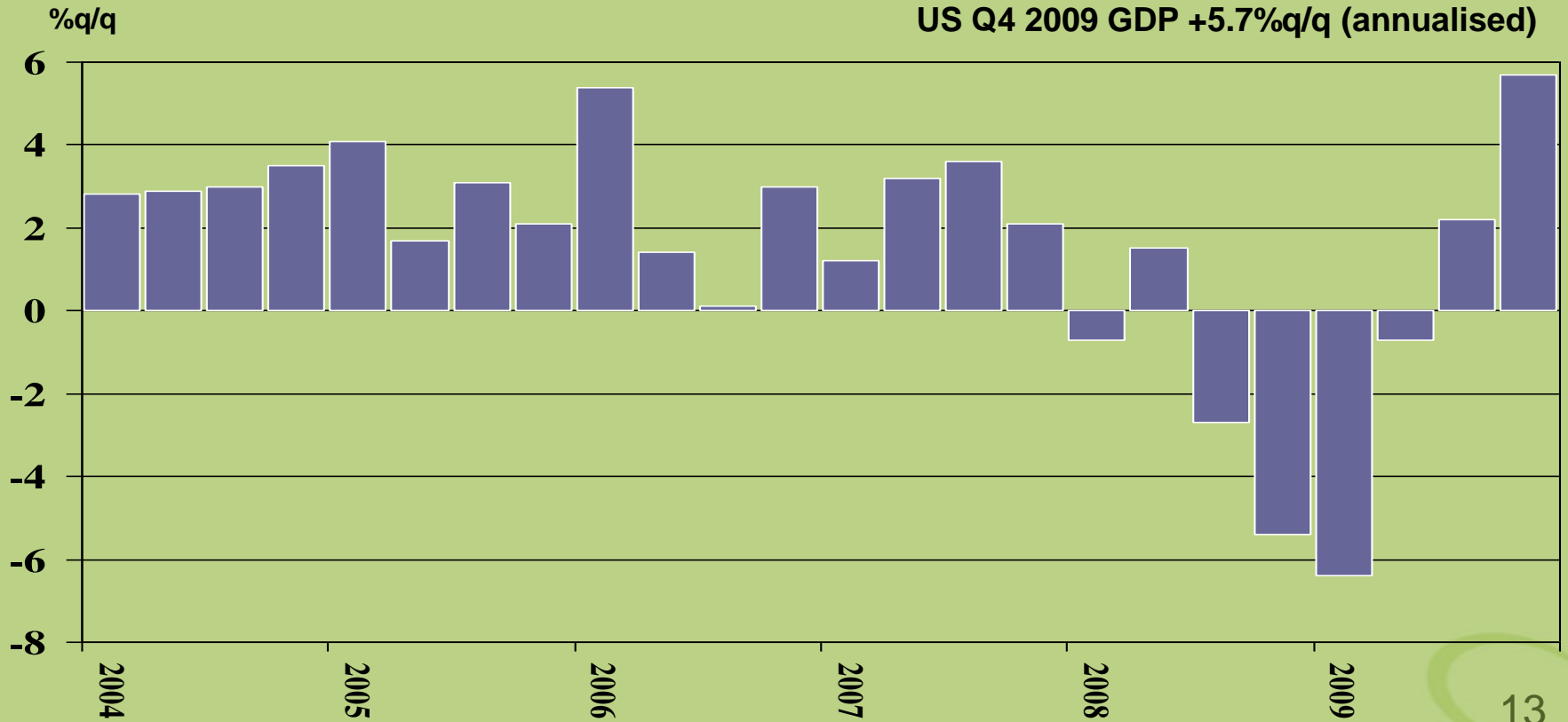


US house prices

US House prices, %, m/m, nominal, S&P Case Shiller



US real GDP growth

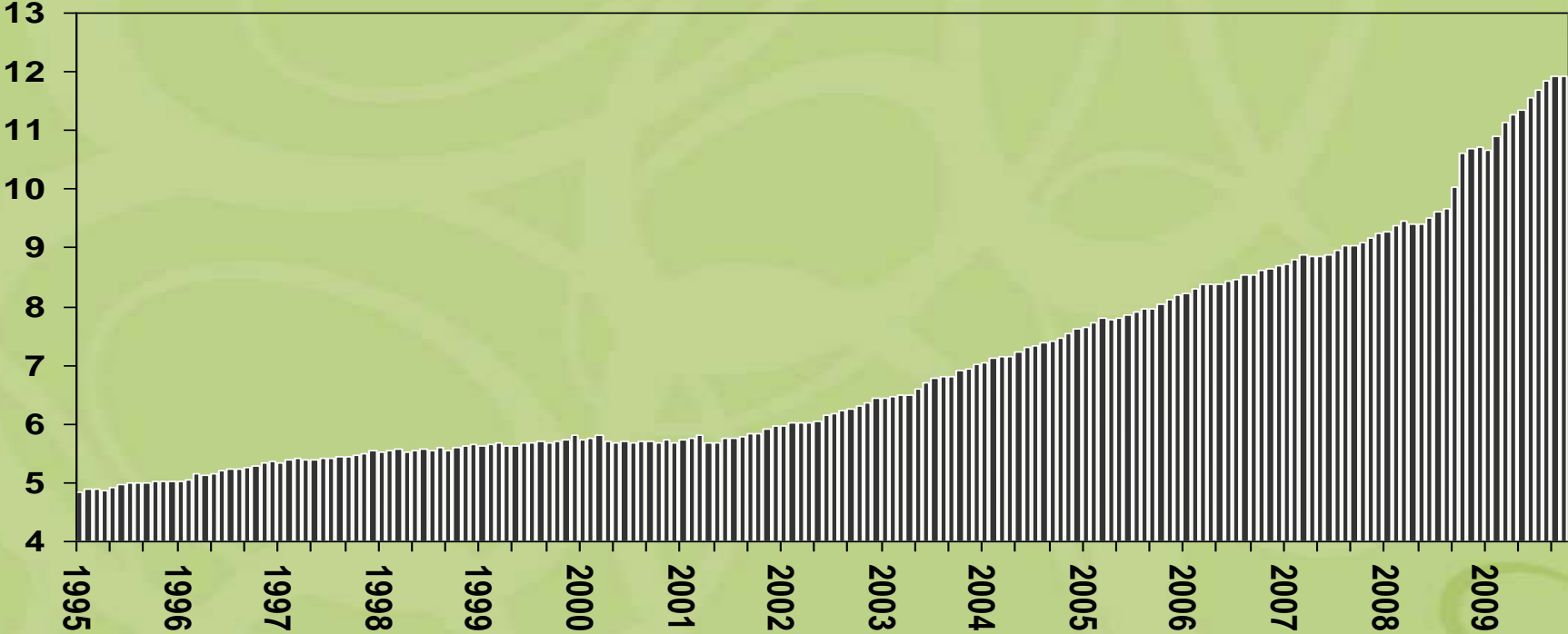


What Now?



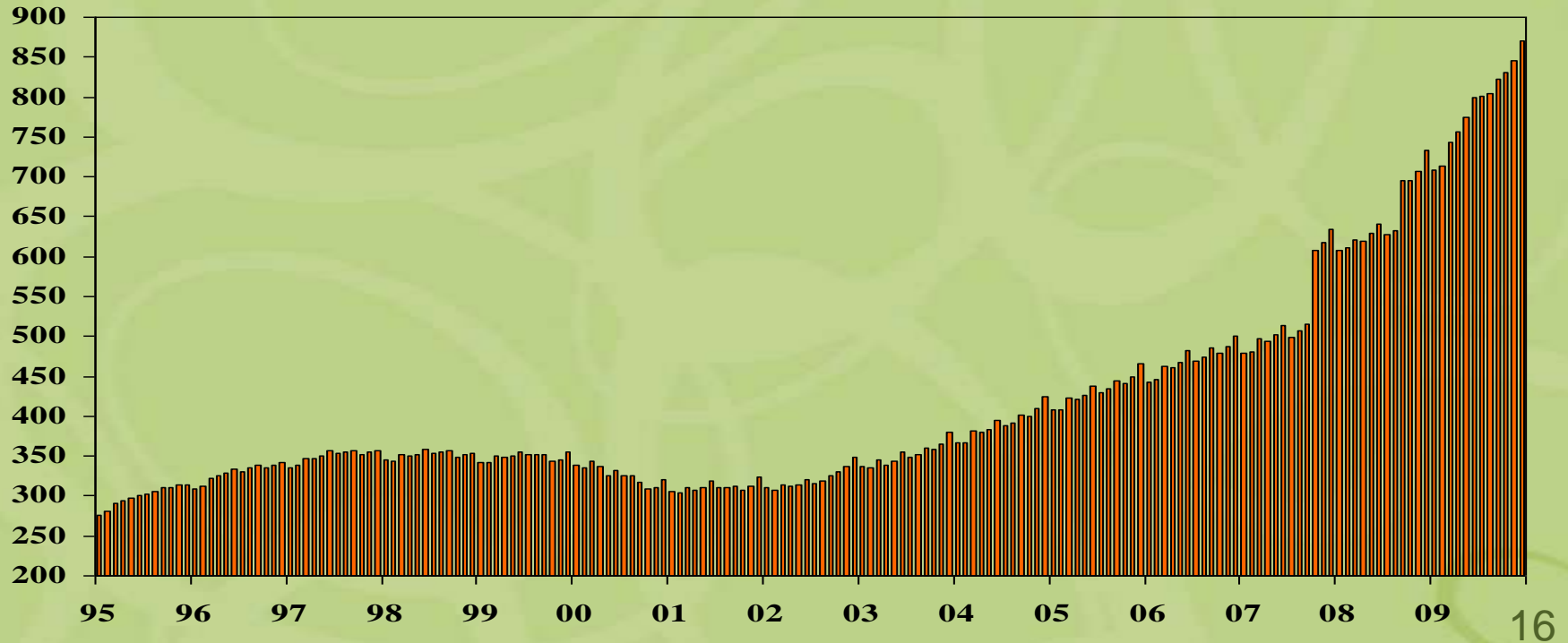
US government total national debt

% trillion



UK net public sector debt

£ billion



Greek government finances – the problem

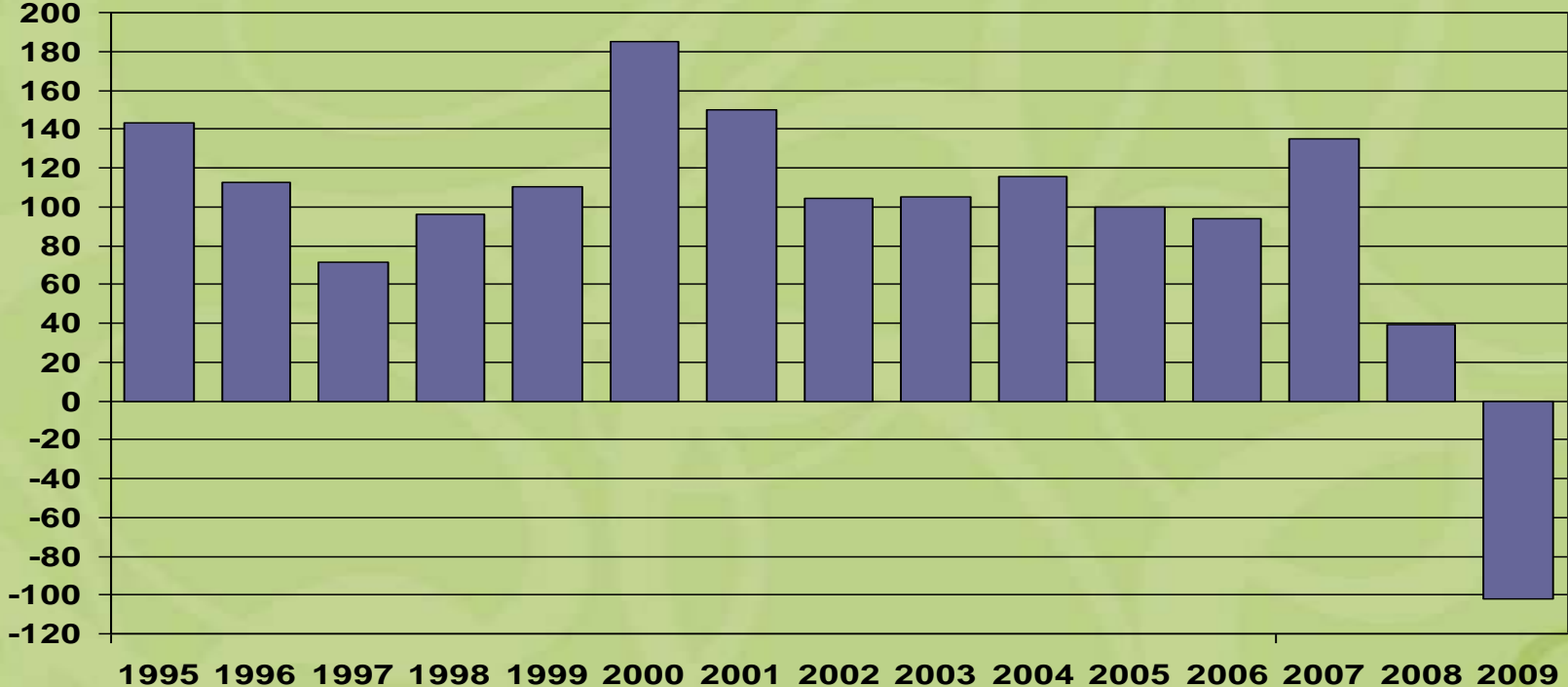


US consumer confidence

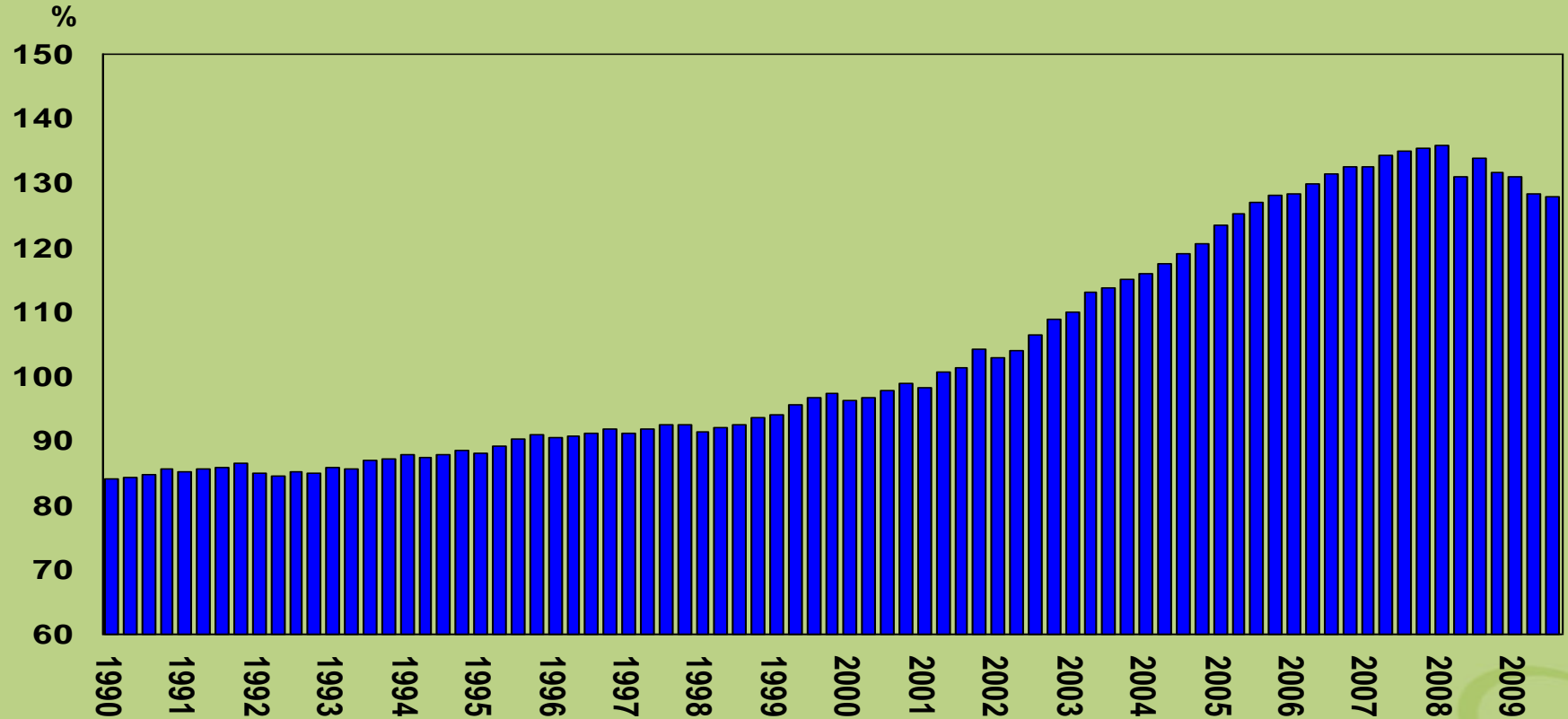


US consumer credit

\$ billion, year-on-year

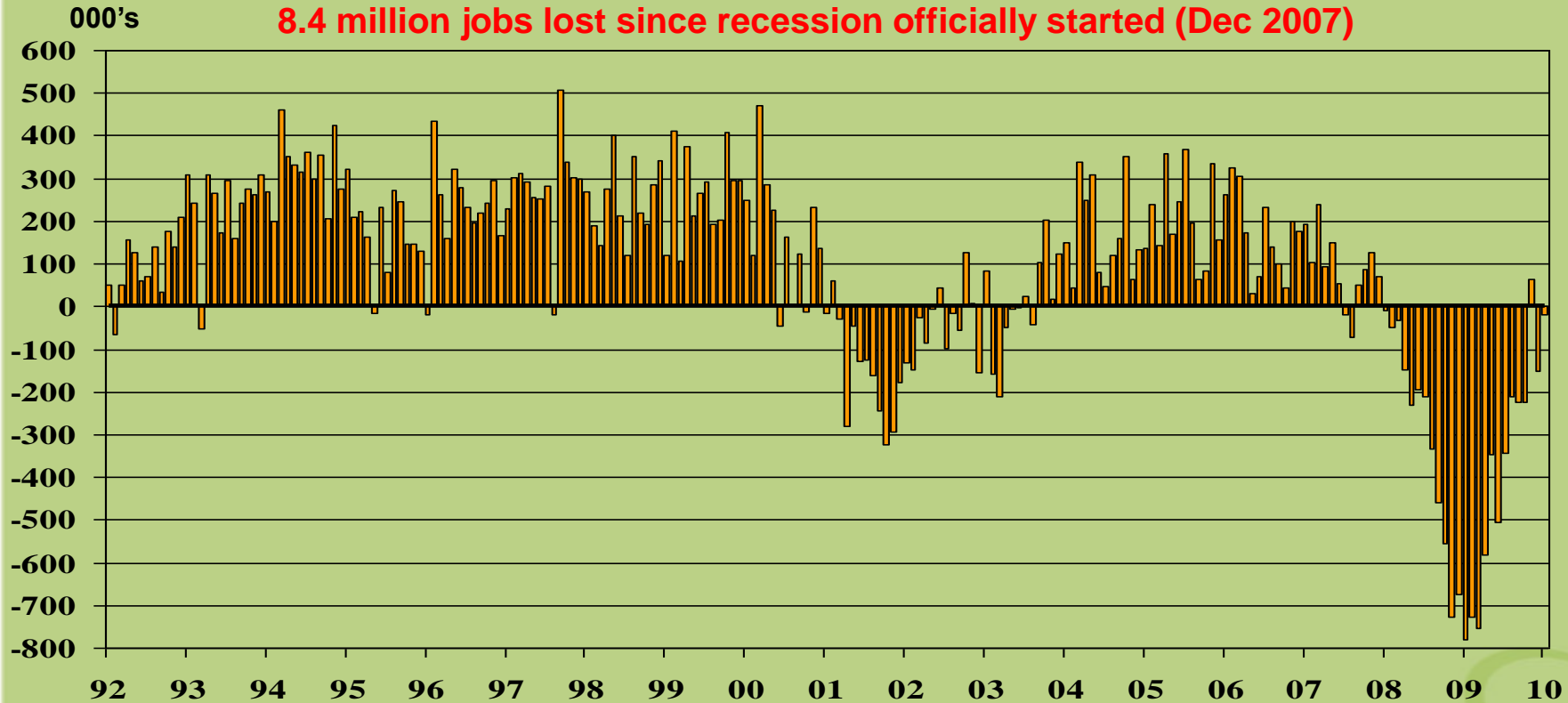


Household debt as % personal disposable income

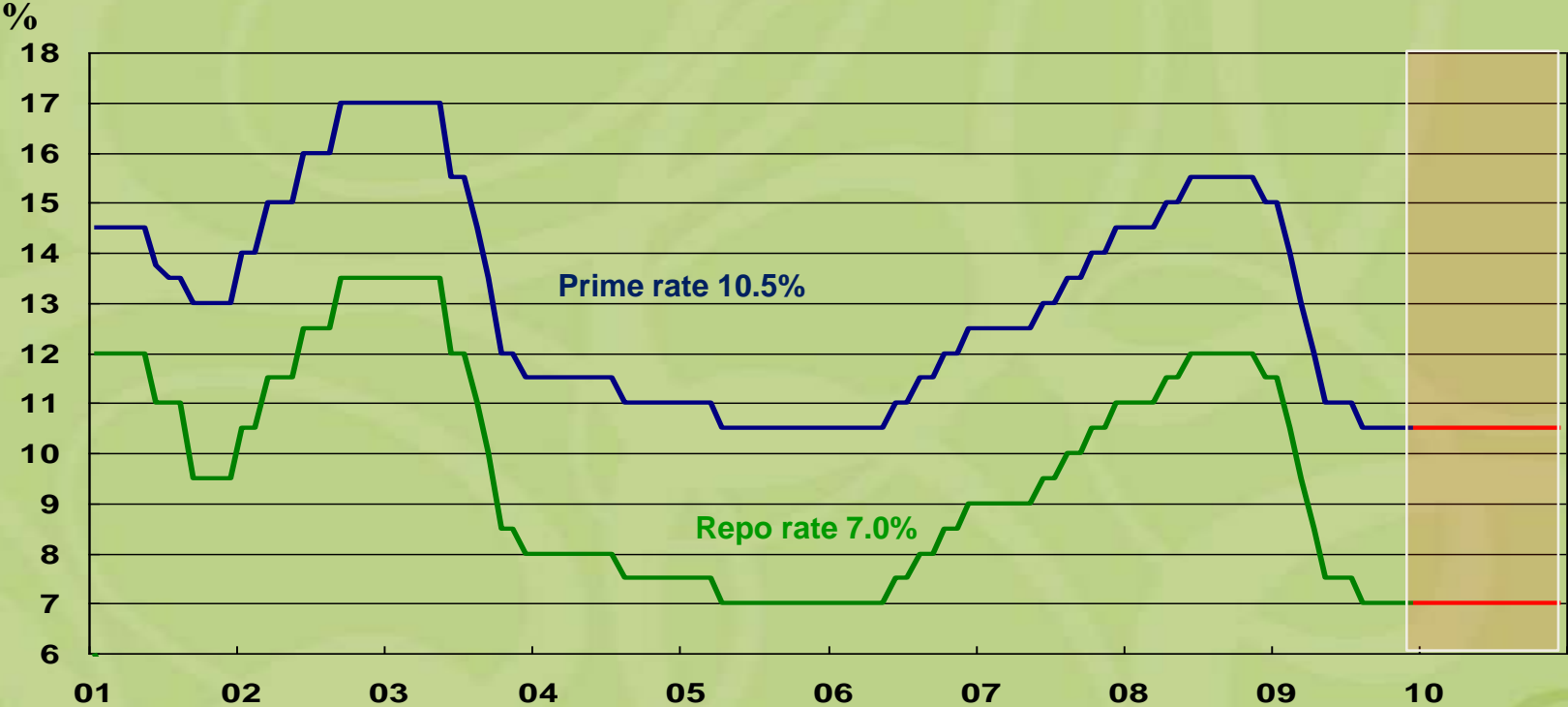


US monthly payroll changes

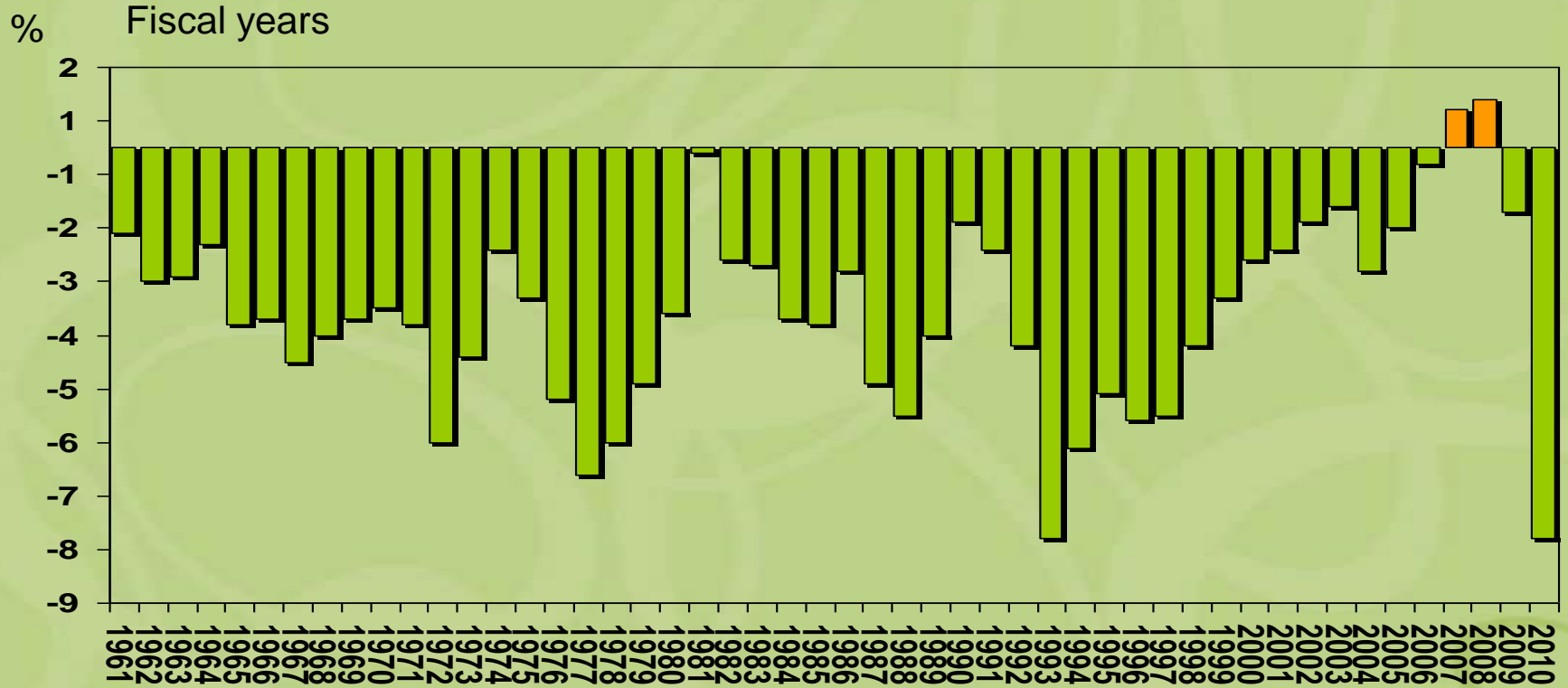
8.4 million jobs lost since recession officially started (Dec 2007)



South Africa Repo Rate vs. Prime Interest Rate

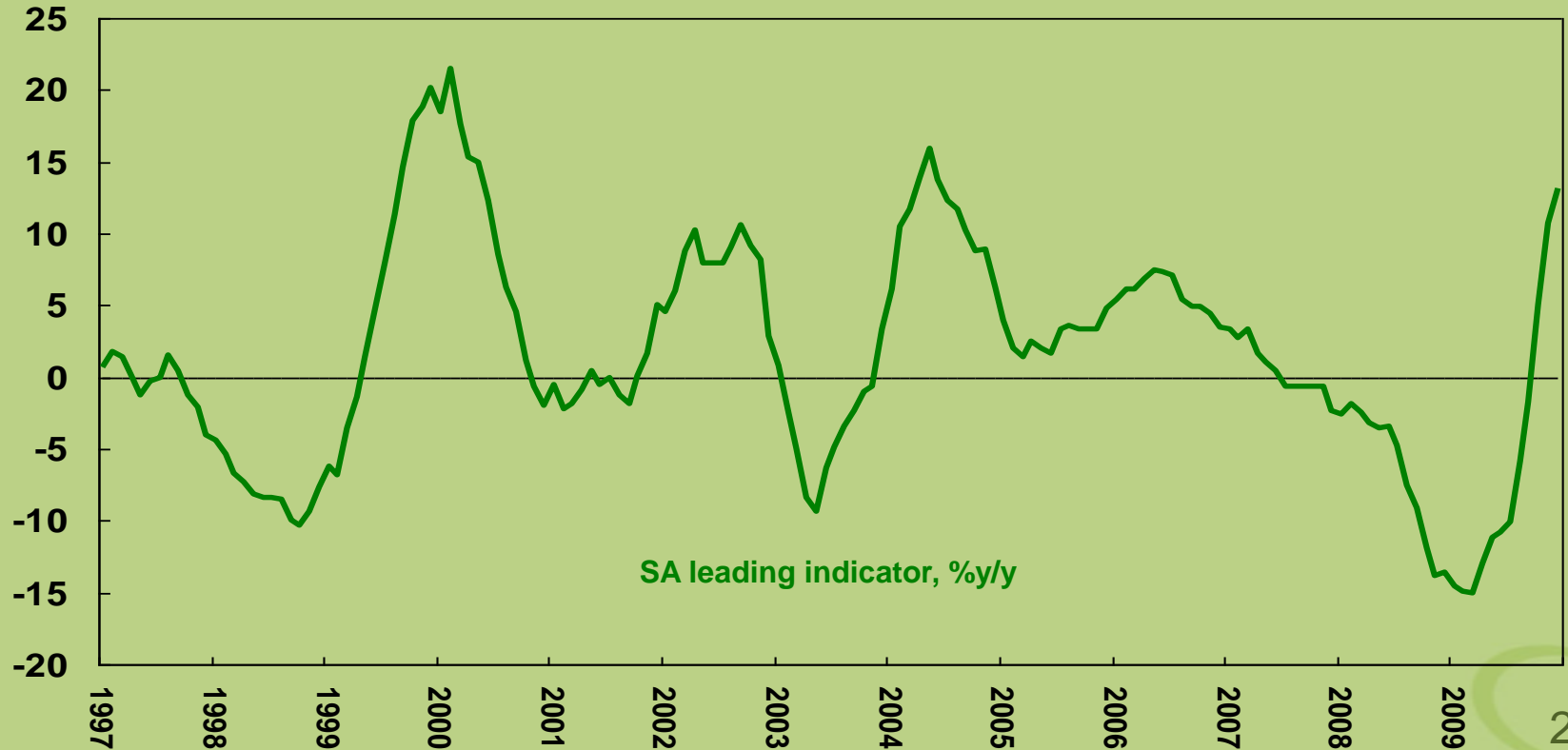


SA budget deficit as % of GDP



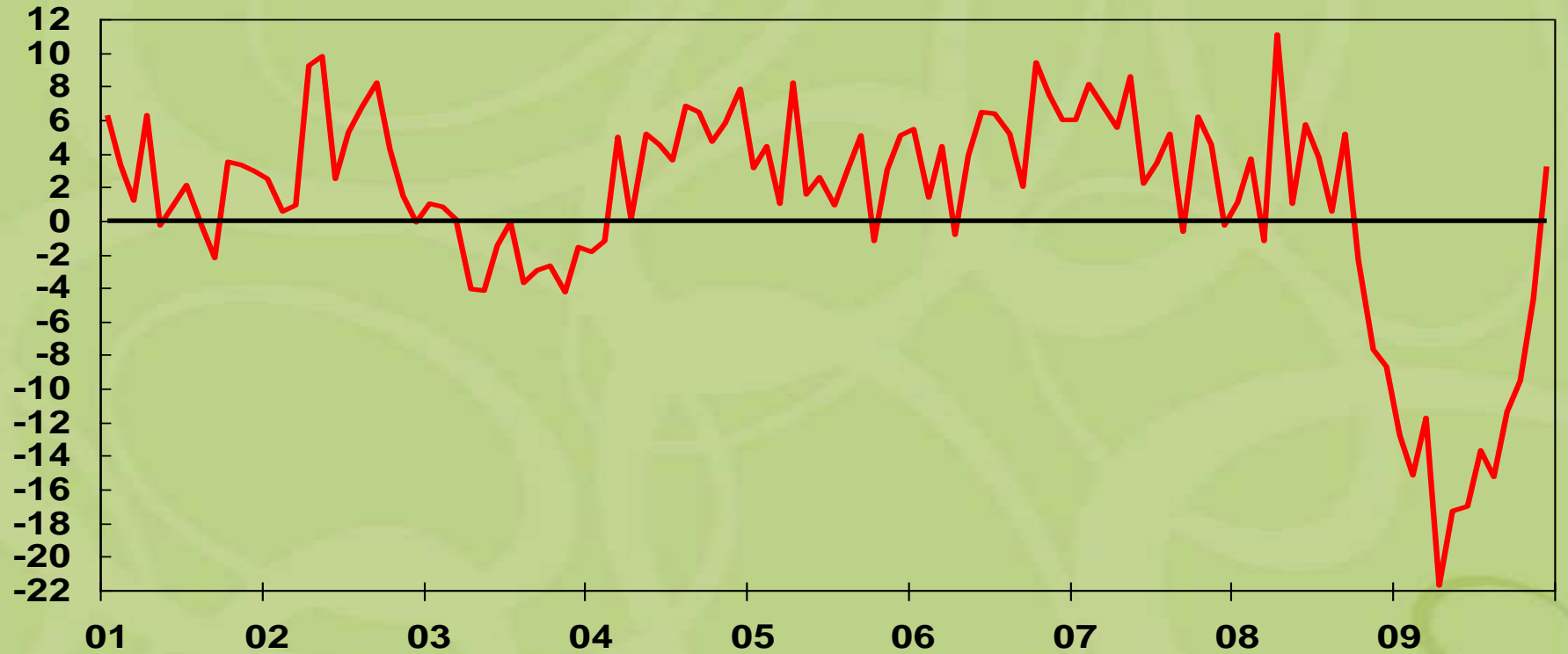
SA leading indicator

%/y

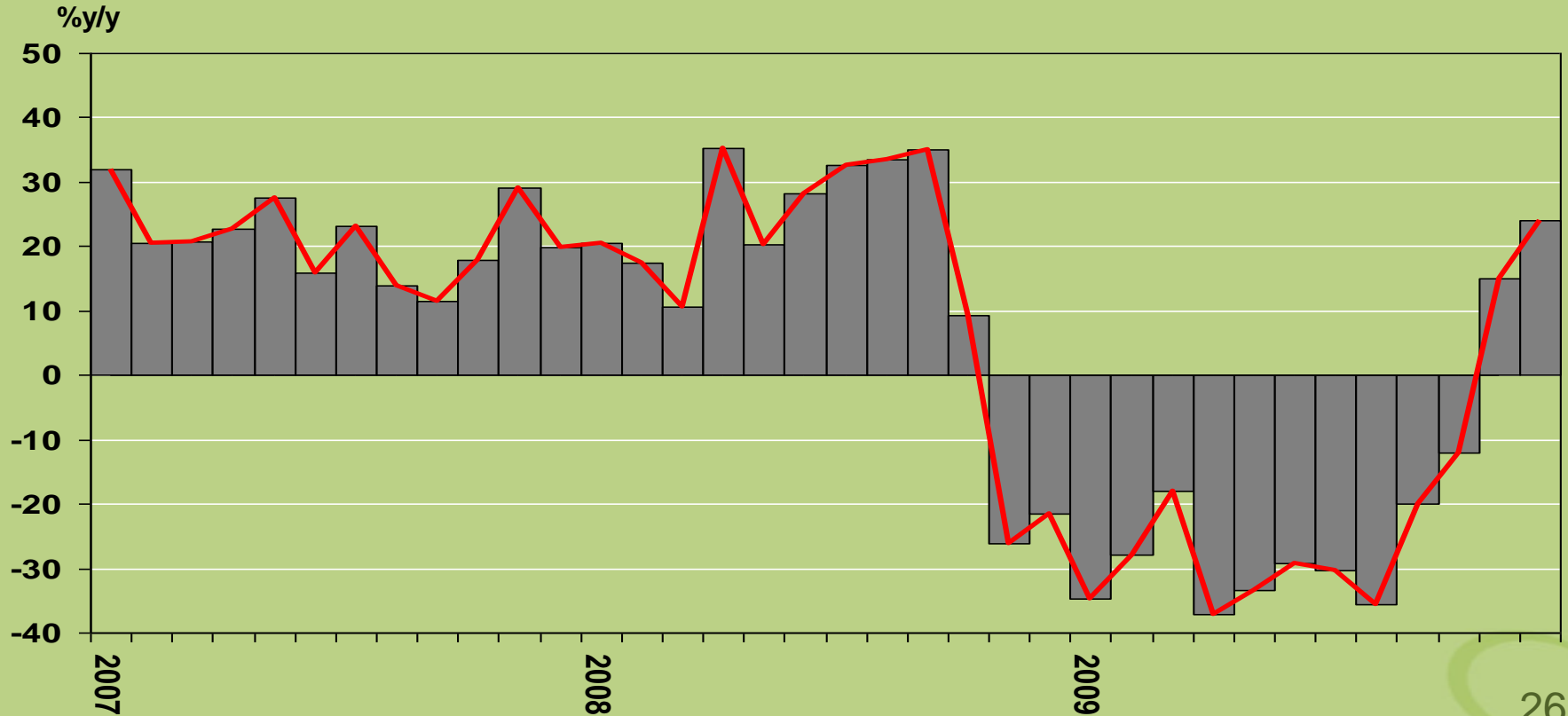


SA manufacturing production

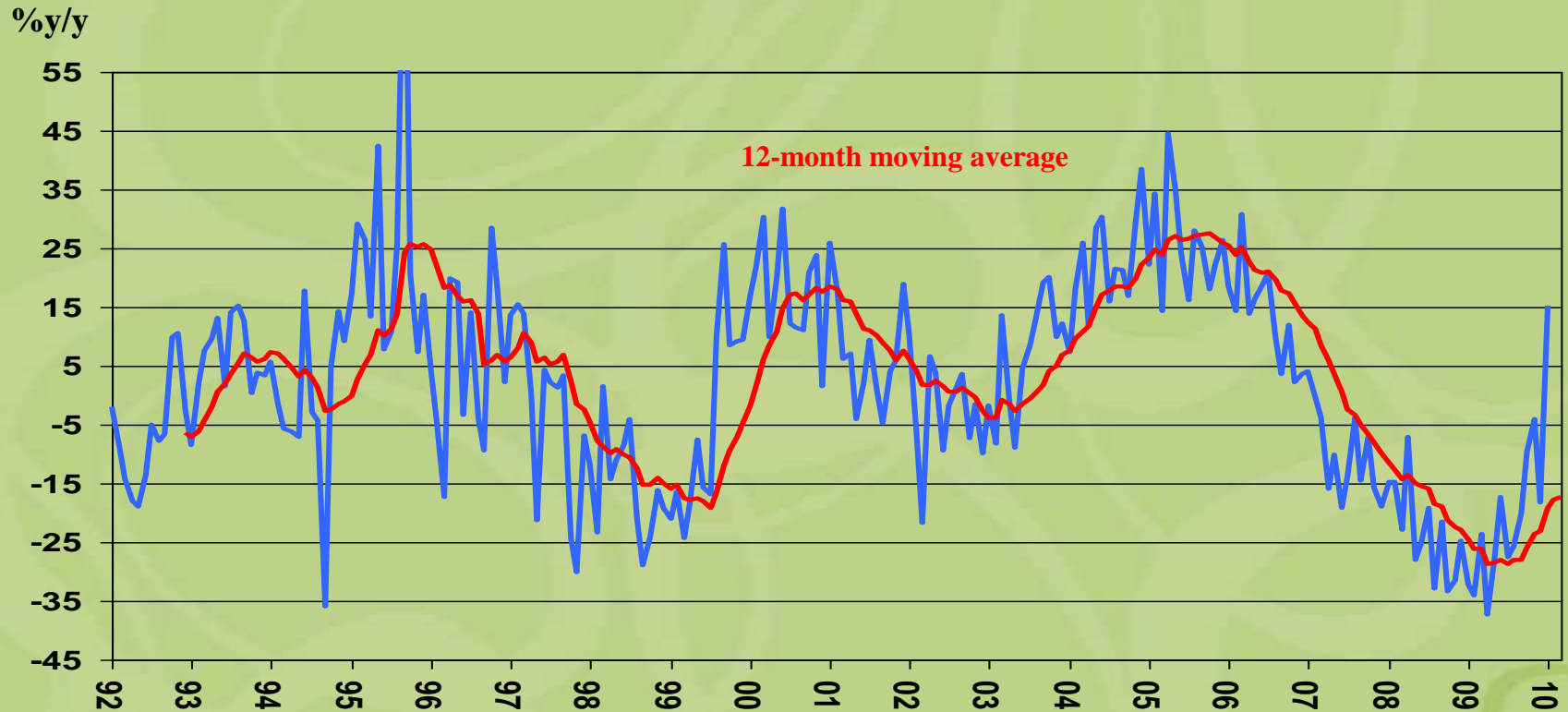
%y/y



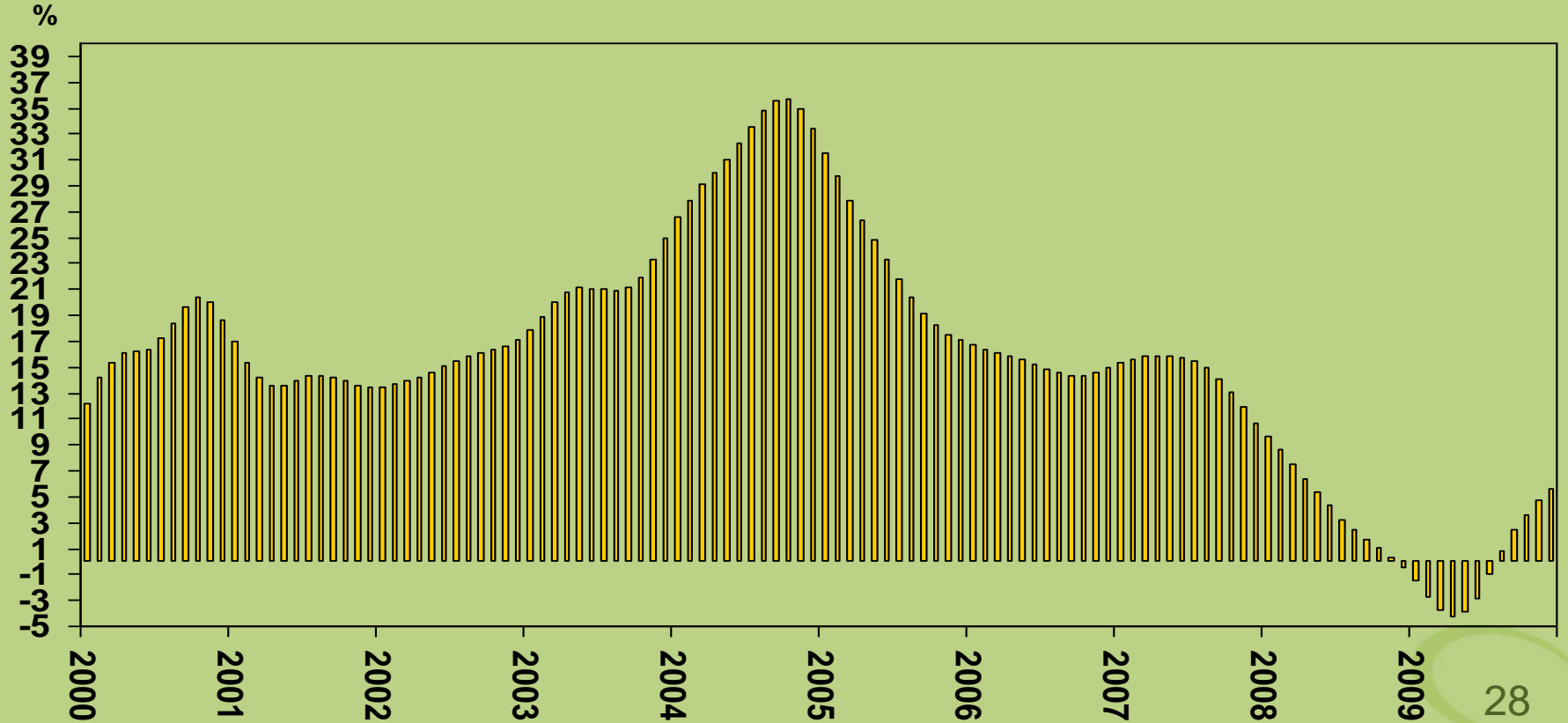
South African Exports (Dollars)



SA passenger vehicle sales

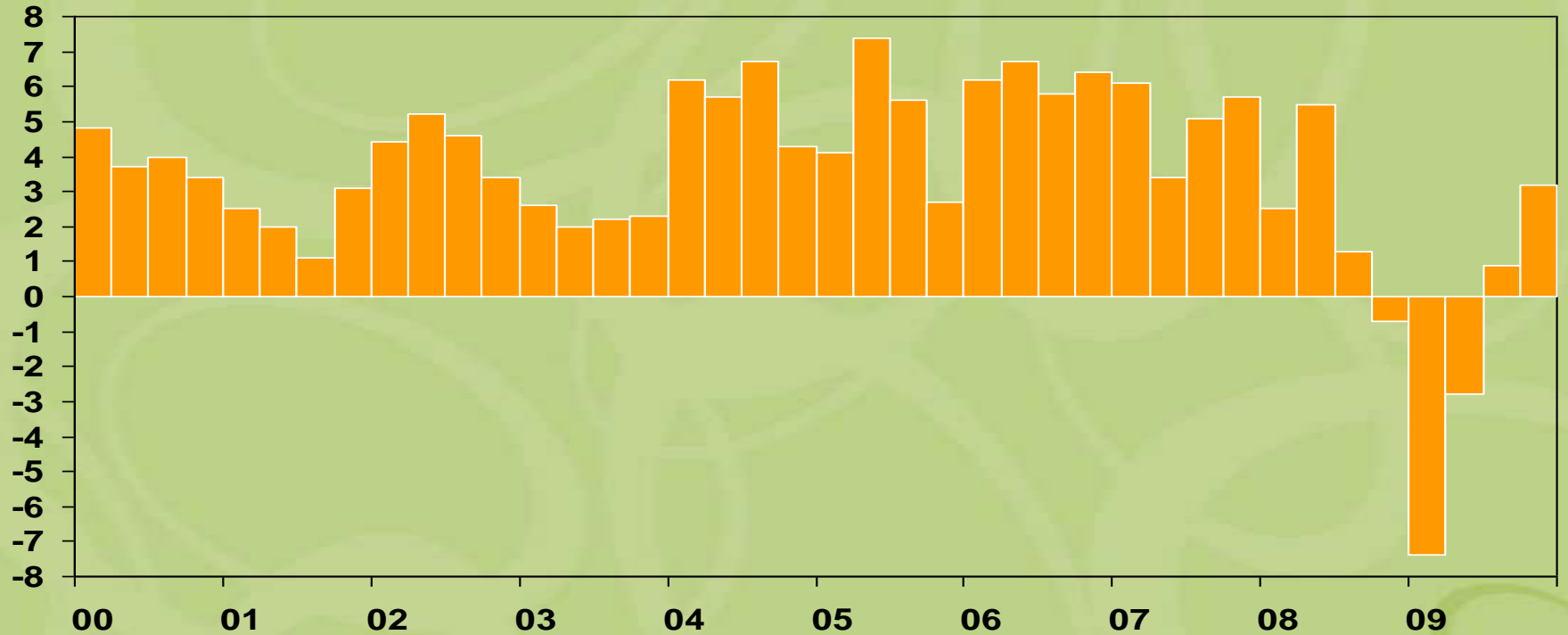


SA average house prices (ABSA data)



SA real GDP growth

%q/q s.a.a.r



SA retail sales



Changes in employment during 2009

Thousands (-870 000 during 2009)



Class of 1998



Class of 1998

GRADE 1
1.444 million
students
enrolled



Class of 1998

GRADE 12
580 937 students
wrote matric

60% drop-out
relative to Grade 1
enrollment



Class of 1998

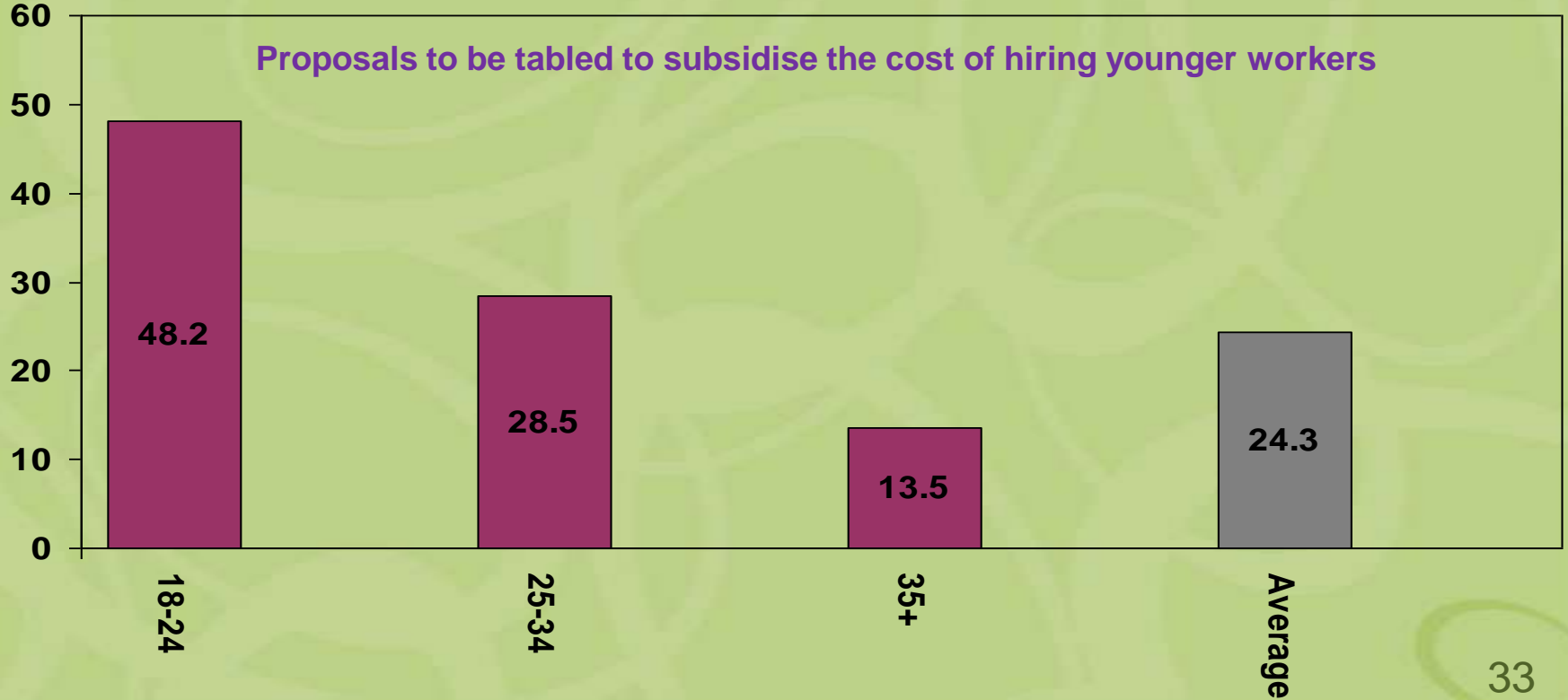
334 718 students
passed matric

23.2% of the total that
enrolled in 1998

**ONLY 23.2% of all students who enrolled in 1998 obtained a matric in 2009
That means around 1.1 million extra students do not have a matric**

Unemployment rate by age group

Unemployment %



Social grant beneficiary numbers

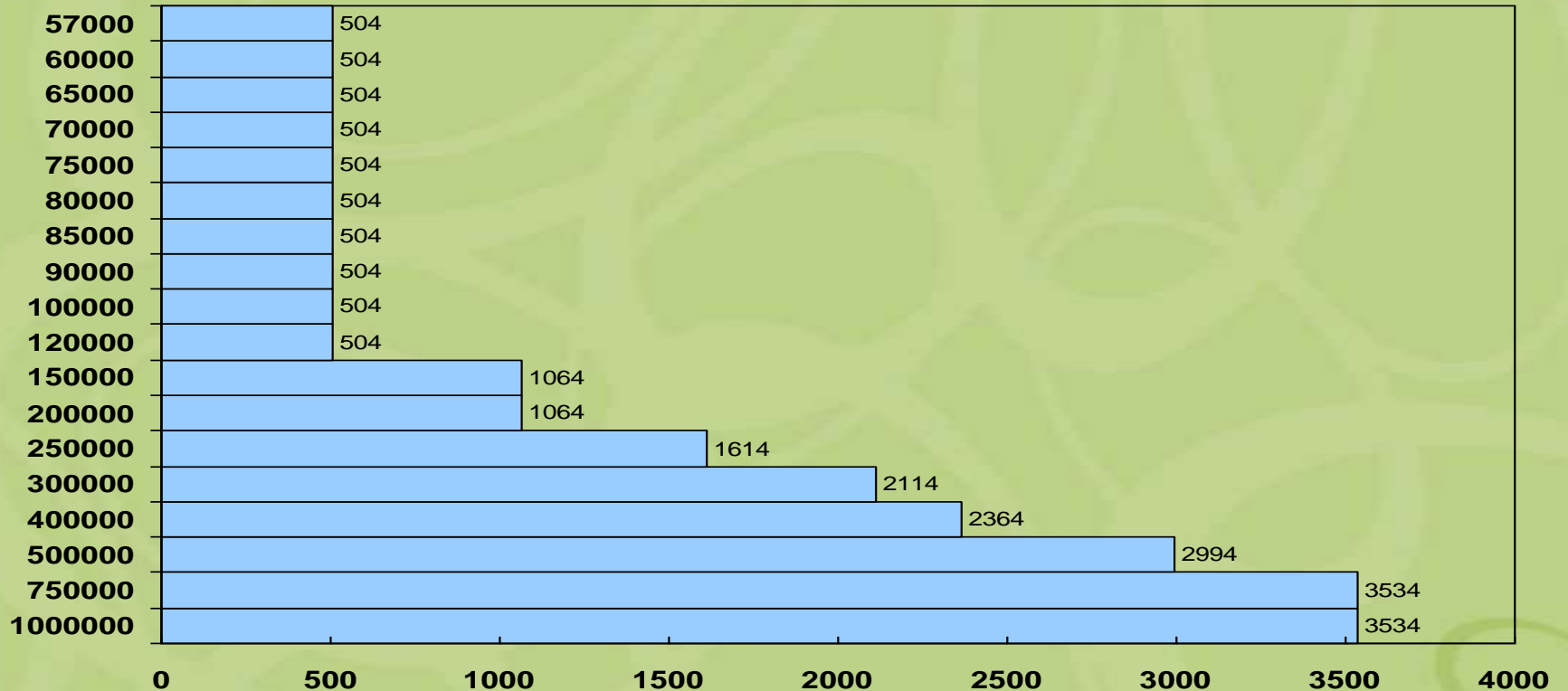
- Number of people obtaining a social grant

• April 2000	2 946 618
• April 2003	5 808 494
• April 2004	7 941 562
• April 2005	9 406 829
• April 2006	10 918 263
• April 2007	11 983 141
• April 2008	12 374 770
• April 2009	13 066 118
• April 2010	13 958 894

Social grants spending is 3.5% of GDP

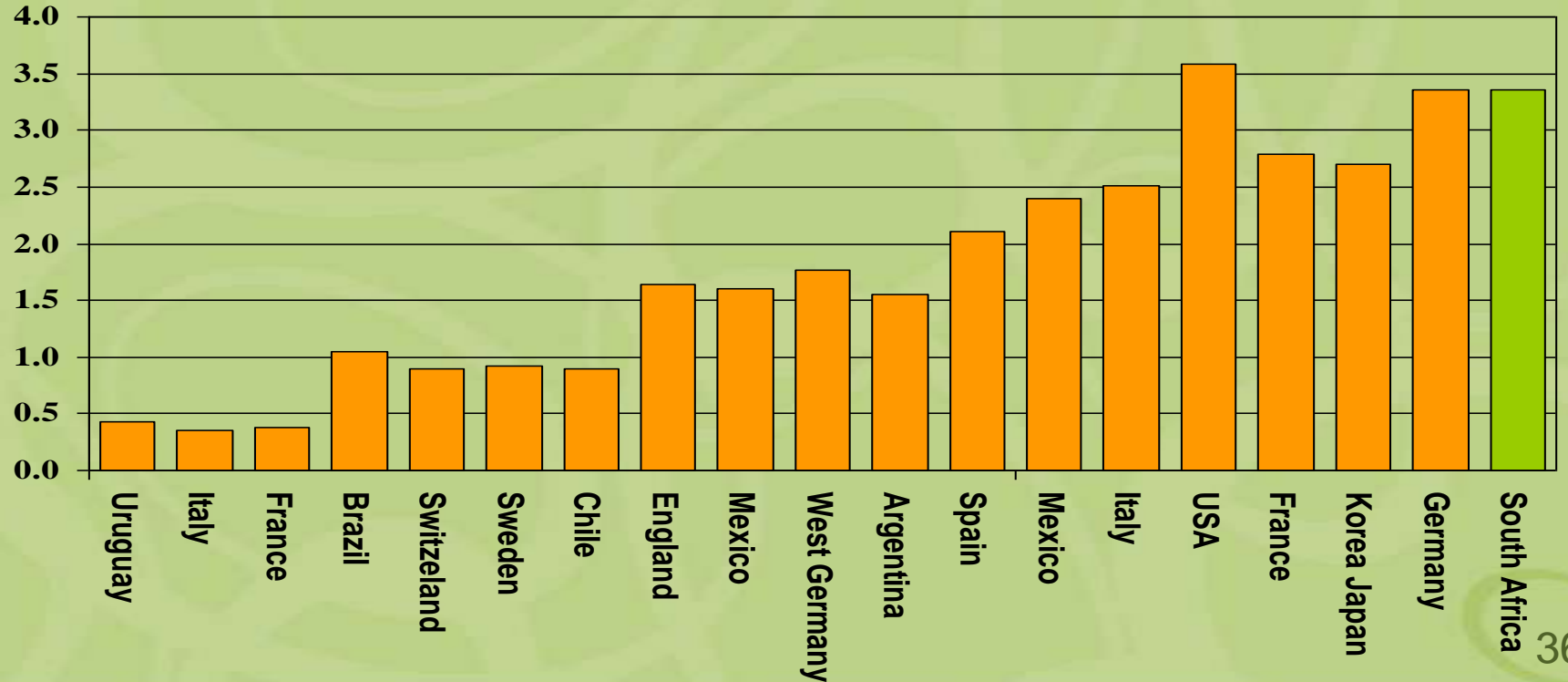
Tax reduction for individuals <65

Taxable income (rands). Tax relief of R6.5 billion in 2010/2011



Attendance at previous soccer world cup tournaments

Million



SA World Soccer Cup 2010 – the numbers

- Total income:

- R9.1bn (excluding ticket sales)
- R14.0bn (including ticket sales)

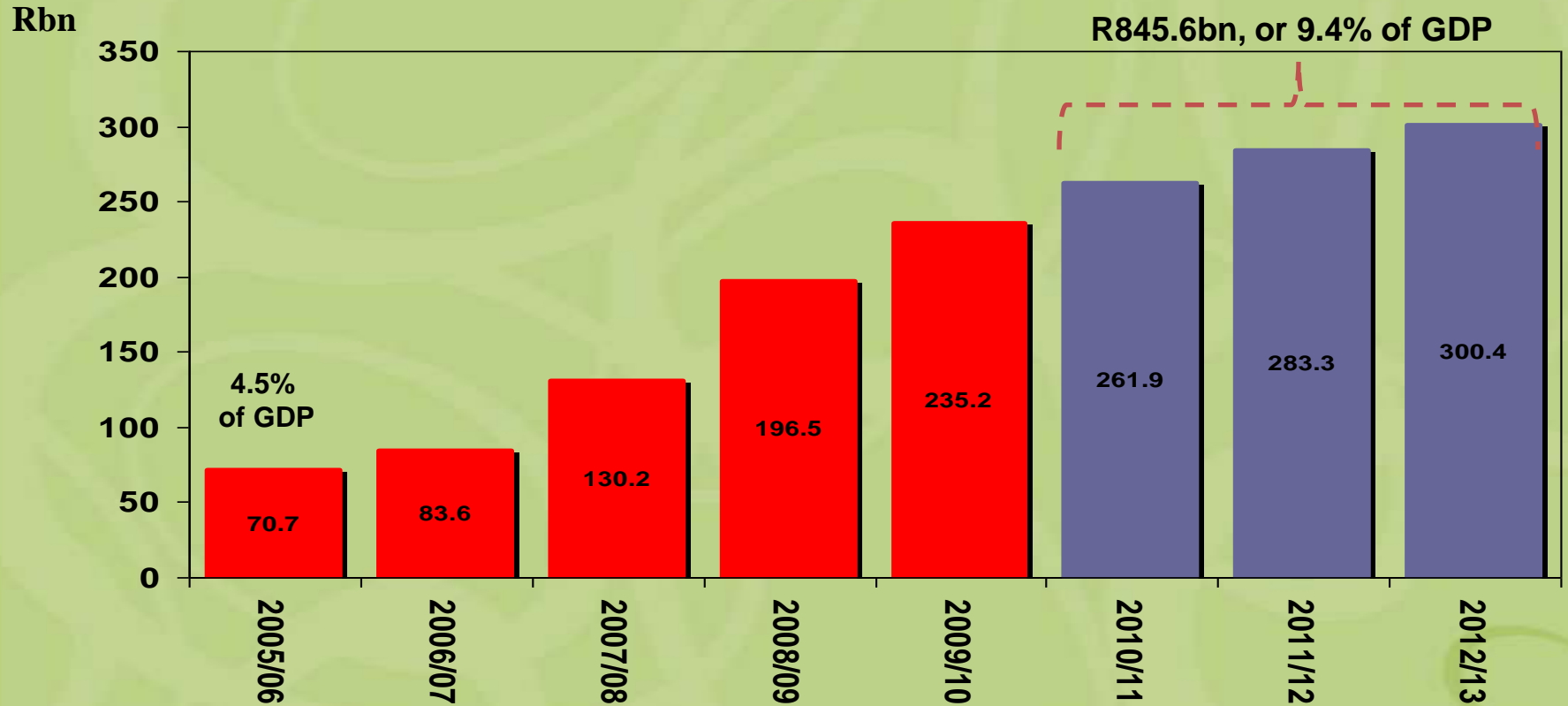
- Total operating expenditure:

- R11.2bn operating expenses

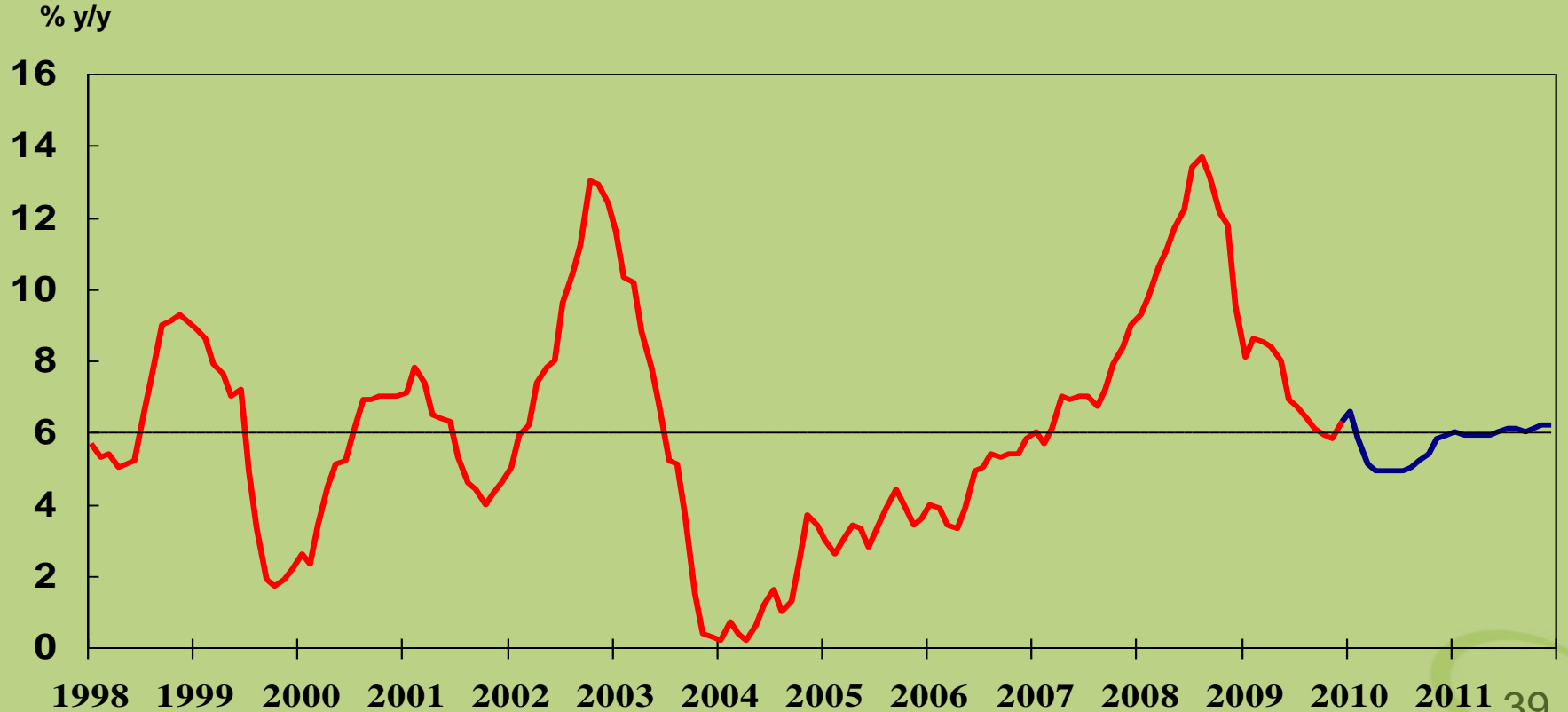
Capital expenditure (5.8% of GDP)

- Stadiums R15.9bn
- Transport R24.4bn
- Gautrain (75%) R20.0bn
- SANRAL R14.3bn
- ACSA R16.1bn
- ICT (Tech) R13.5bn
- Private sector R21.0bn
- Other R12.8bn

Public sector infrastructural spending



SA headline CPI forecast (25% electricity hike)





Thank You

